

PFAFF[®] Industrial

Excellence in seaming



3307

Electronic button sewer



Increase your effectiveness and efficiency. The chainstitch button sewer PFAFF 3307 is reliable, the buttons are firmly attached. The skip stitch sensor and double end stitch knotting device see to that. The single thread technique results in a neat seam without "birds nest". This makes it possible to sew soft, modern materials. The production is effective due to high speed, low conversion and processing times: No bobbin change, no need to provide several bobbins with different coloured threads. The high needle bar stroke and the pendulum-type needle bar provide you with a high degree of flexibility. This technology increases the application scope of the PFAFF 3307. All the most common types of button can be sewn, from the standard type to the self-shank button. The PFAFF 3307 guarantees firmly secured buttons, high output and flexibility.



Excellent product properties:

Pendulum-type needle bar

- high sewing reliability and secure position of the workpiece
- large cross stitch up to 8 mm

Electronic control

- free seam programming with easily understandable user guidance
- memory for 99 seam programs per button style

Secure stitch equipment

- Double-knotting of the end stitch prevents the seam unravelling and the buttons falling off
– a unique quality feature in comparison with other button sewing machines on the market

Single-thread chainstitch (seam type 101)

- a neat seam, no „birds nest“
- no time is lost changing the thread colour, no bobbin change required

Skip stitch sensor

- controls the formation of a secure seam and gives a signal for missed stitches or sewing errors
- shows functional deficits of the machine, such as an incorrect setting of the sewing parts

Integrated sewing drive

- smooth, low-vibration operation
- simple machine set up

Space

- 30 x 200 mm space below the button clamp guarantees easy attachment of the buttons even on bulky articles
- 17 mm clamp lift makes it possible to sew very thick workpieces
- 46 mm needle bar stroke makes it possible to sew on very large self-shank buttons with a diameter of up to 30 mm, or buttons with a stem length of up to 12 mm

3307 -1/01 -1/02 -1/13

For attaching flat button types



3307-1/01

Clothing and linen in general,
light to medium materials

Attaching 2, 3, 4 or 6-hole buttons /
buttons up to 2 mm thick *

- With and without stem (stem length up to 6 mm)
- With and without stay button
(in conjunction with a stay button plate)

3307-1/02

Outerwear in general, medium to heavy materials

Attaching 2, 3, 4 or 6-hole buttons /
buttons up to 4 mm thick *

- With and without stem (stem length up to 12 mm)
- With and without stay button

3307-1/13

Outerwear in general, medium to heavy materials

Attaching or blind sewing 2, 3, 4 or 6-hole buttons /
buttons up to 6 mm thick *

- With and without stem (stem length up to 12 mm)
- With and without stay button

* button diameter: max. 55 mm

Equipment:		-1/01	-1/02	-1/13
Needle system		134-35	190 K	190 K
Double end stitch knotting		✓	✓	✓
Control panel with seam pattern programming		✓	✓	✓
Thread wiper / air blast		✓	✓	-
Stem finger for short stems (2 mm)		✓	-	-
Thread wiper / mechanical		-	-	✓
Universal clamp		-	-	✓
Blind stitch guide	No. 91-232 992-90	●	●	✓
Stay button unit, retractable	No. 91-180 095-91	●	●	✓
Stem finger for cross-stitch (arm lengthwise)	No. 91-233 409-91	●	●	✓
Stem finger for cross-stitch (arm crosswise)	No. 91-233 410-91	●	●	✓
Stay button plate, fixed	No. 91-180 620-93	●	●	-
Skip stitch recognition device	No. 91-233 363-90	●	●	✓
Button distance gauge left/right	No. 91-232 953-90	●	●	-
Edge guide stop	No. 91-232 827-25	●	●	-
Blind stitch guide left, e.g. button on waistband lining	No. 91-232 991-90	●	●	-

✓ = Standard ● = Option

3307 -1/11

With automatic button feed



3307-1/11

Attaching 2, 3 or 4-hole buttons, with automatic button feeder.

Very important - the buttons to be used must be sent in!

- With and without stem (stem length up to 2 mm)

Maximum output with the 3307-1/11:

The button feeder is located directly behind the button clamp. During the sewing operation the next button is already "in loading position". An output of 40 buttons/min. (with 14 stitches) is possible.

Equipment:		-1/11
Needle system		134-35
Double end stitch knotting		✓
Skip stitch recognition device		✓
Control panel with seam pattern programming		✓
Thread wiper, pneumatically-controlled		✓
Stem finger for short stems (2 mm)		✓
Standard conversion kit for other button models	No. 91-233 241-93	●
Quick conversion kit	No. 91-233 242-93	●
Quick conversion kit with sorting container	No. 91-233 243-93	●



On request:

PFAFF 3307 with special sewing kit to attach curtain rings to modern pleated blinds. With a vibrating plate that automatically feeds the rings to the machine the 3307 yields an output of 30 to 40 attached rings per minute.

3307

-3/01

-9/02

Twin-set up



3307-3/01

Sewing/blind stitch buttons on suits (single and double-breasted), jackets and coats

- Sink-stitching with or without stem, with or without stay button
- Blind-stitch, with or without tacking down the facing, with 1 – 3 stitches

3307-9/02

Stem-wrapping machine, maximum stem length 12 mm

- Automatic stem length changeover

3307-3/01 + 3307-9/02

Twin-set-up

Sewing/blind stitch buttons and stem-wrapping buttons on sports jackets (single and double-breasted), jackets and coats

- Sink-stitching with or without stem, with or without stay button
- Blind-stitch, with or without tacking down the facing, with 1 – 3 stitches
- Stem length up to 12 mm, infinitely variable



Equipment:		-3/01	-9/02
Needle system		190	332 LG HK SP
Double end stitch knotting		✓	-
Skip stitch detection device		✓	-
Control panel with seam pattern programming		✓	✓
Mechanical thread wiper		✓	✓
Infinitely variable clamp for stem length 5 - 12 mm		-	✓
Device for positioning and loading the workpiece		✓	-
Device for blind-stitching		✓	-
Device for tacking down the facing		✓	-
Device for sewing different stem lengths		✓	-
Fixed stay-button plate with button seat 10.5 x 10.5 mm	No. 91-180 620-93	✓	-
Automatic stem length changeover		-	✓

✓ = Standard ● = Option

3307 -5/02

For attaching self-shank and flat buttons



3307-5/02

For attaching self-shank and flat buttons, e.g. when sewing uniforms or blazers

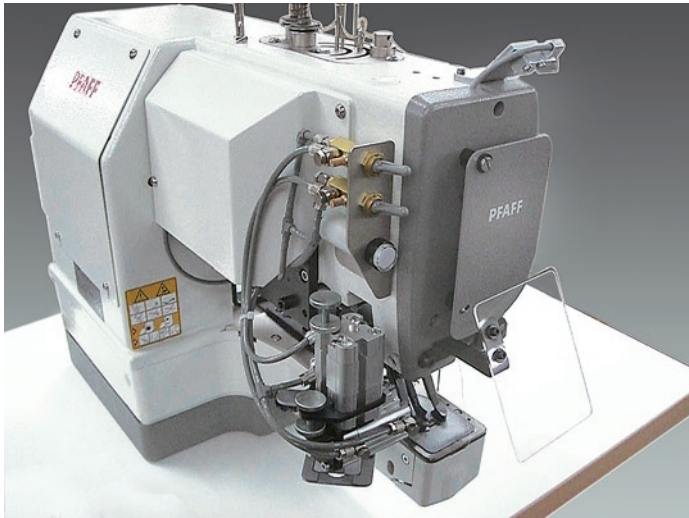
- Simple, easy-to-use seam pattern programming on standard control panel
- Skip stitch detection device (this option only for use with flat buttons) – missed stitches are displayed, which are usually not recognized during a visual control
- High sewing reliability due to pendulum-time needle bar
- All common self-shank buttons can be sewn by simply changing the self-shank button holder
- Easy conversion also makes it possible to use for attaching 2-, 3-, 4- and 6-hole buttons

Equipment:		-5/02
1 clamp each for self-shank and flat buttons		✓
Needle system		190 K
Double end stitch knotting		✓
Control panel with seam pattern programming		✓
Mechanical thread wiper		✓
Stem finger for cross-stitch lengthwise to arm *	No. 91-233 409-91	●
Stem finger for cross-stitch crosswise to arm *	No. 91-233 410-91	●
Fixed stay-button plate	No. 91-180 620-93	●
Button holder	No. 91-233 058-14	●
Button seat	No. 91-180 608-14	●
Skip stitch detection device*	No. 91-233 363-90	●

* only for use with flat buttons

3307 **-7/20**

For attaching and blind stitching of buttons with or without stem



3307-7/20

- Attaching and blind stitching of 2-, 3-, 4- hole buttons in the men's and ladies outerwear section
- With or without stem or stay button
- With or without cross-over stitches with blind stitch guide and device for variable stem length
- Stem lengths via cylinder adjustable

Equipment:	-7/20
Needle system	190 K/ 134-35 K
Control panel with seam pattern programming	✓
Thread wiper	✓
Clamp for quick opening	✓
Blind stitching guide at rear	✓
Retractable stay button plate	✓

✓ = Standard ● = Option

3307 -4/01

For tacking work



3307-4/01

General tacking work

- Tacking on paper tags and textile labels
- Tacking on shoulder pads
- Tacking socks, gloves etc. together
- Cross stitch width max.: 8 mm

3307 -4/02

Special machine for tacking hatbands on brimmed hats



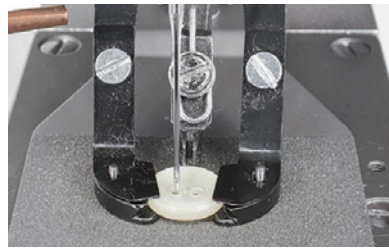
3307-4/02

Efficiently attaching bands and decorations to all kinds of hats.

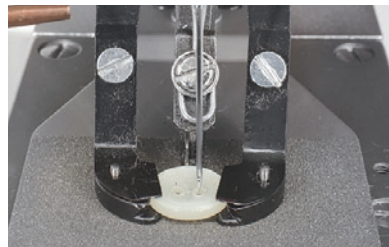
- Wide range of application. Hats made from any type of material (felt, straw, leather, cloth etc.) may be worked on. Be it a thin satin band or an extremely strong leather band or strings – the machine safely and reliably attaches all types of hat bands.

Equipment:		-4/01	-4/02
Needle system		190 K	190 K
Control panel with seam pattern programming		✓	✓
Thread wiper / air blast		✓	✓
Clamp foot for general tacking work	No. 91-233 253-15	✓	✓
Clamp foot for tacking socks and gloves together etc.	No. 91-233 250-11	●	–
Clamp foot for tacking textile labels on outerwear	No. 91-233 362-11	●	–
Clamp foot for tacking on shoulder pads	No. 91-233 297-11	●	–

The simple programming of the 3307



Positioning the needle in the first hole
-> confirm the position



select the second sewing position
-> positioning the needle in the second hole

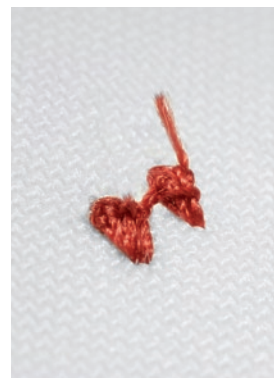
- The programming of the 3307 is child's play. The input panel can be controlled intuitively and enables the programming of all conceivable types of 2-, 3-, 4- or 6-hole buttons with the teach-in method.
- 99 sewing programs per button type can be stored – the simple and quick selection of the programs is possible at any time.

The stitch formation of the 3307 (Single-thread chainstitch)



Stitch formation (4-hole button) of a lockstitch button sewer
The start thread realized a "birds nest"

- After the sewing circle 4 long thread ends remain

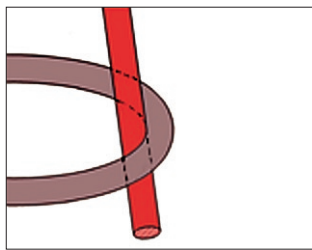


Stitch formation (4-hole button) of a chainstitch button sewer

- Neat seam, no „birds nest“
- After the sewing circle a short thread end remains

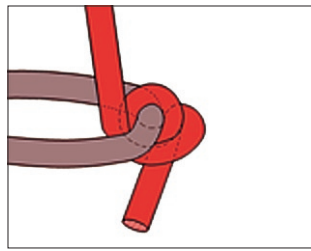
Remark:
Needle thread: red
Bobbin thread: yellow

The double knotting of the end stitch on the 3307 (patented)



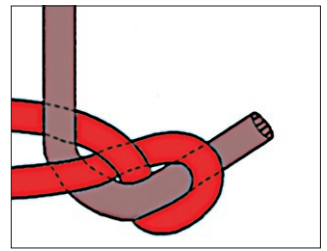
Single
chainstitch

(single
knotting)



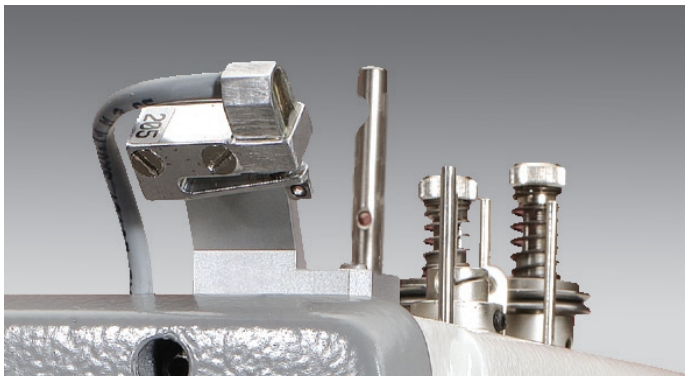
Double knotting
of the end stitch

Double
security



- With the patented feature of double-end-stitch knotting the thread end is secured and unwanted unravelling of the seam prevented
- The double knotting of the end stitch guarantees securely attached buttons which do not fall off

The skip stitch sensor of the 3307



- A thread, needle problems or a misplaced button can cause a skip stitch in the sewing sequence.
- The skip stitch sensor also controls the double end stitch knotting feature.
- If the equipment recognises an error, the machine is stopped and sounds an alarm.
- It is possible to correct the mistake immediately
-> Costs are lowered and the number of controls reduced.

Specifications:

Max. speed:

2000 s.p.m. (standard machine)

Stitch type:

101

Max. material thickness:

4 mm

Needle bar stroke:

46 mm

Max. size of the sewing area:

8 mm x 12 mm

Feed type:

Intermittent

Power supply:

230 V (50/60 Hz)

Working air pressure:

6 bar

Approximate dimensions of the sewing workplace:

Length: 1060 mm

Width: 600 mm

Height: 1270 mm



Hotline:

Technical service: +49-175/2243-101



**PFAFF Industriesysteme
und Maschinen AG**

Hans-Geiger-Str. 12 – IG Nord
D-67661 Kaiserslautern

Telefon: +49-6301/3205-0

Telefax: +49-6301/3205-3171

E-mail: info@pfaff-industrial.com

Printed in Germany
engl.
296-12-18814 12/13